

# CRUSHERS PULVERIZERS



**BICO**  
braun international

Since 1888



**MANUFACTURERS OF  
MINING AND GEOLOGICAL  
LABORATORY TEST  
EQUIPMENT**

3116 VALHALLA DRIVE • BURBANK, CALIFORNIA 91505 • U.S.A.

PHONE (818) 842-7179 • FAX (818) 842-7976

[www.bicoinc.com](http://www.bicoinc.com) • [sales@bicoinc.com](mailto:sales@bicoinc.com)



# PULVERIZERS

The **UA PULVERIZER** will reduce a 6.35MM (1/4") quartz sample to 150-200 mesh at an approximate rate of 1#/min. The unit provides you with an easy, efficient design for cleaning between samples, in addition to being durable and easy to maintain. Replacement grinding plates are available in a variety of materials, including ceramic for contamination free sample preparation.



MODEL 242-53

## UA V-BELT PULVERIZER

Shown with Safety Guards and Motor and optional Ceramic Grinding Plates.

- Available in 2, 3, and 5HP
- Single Phase & Three Phase



UA-92/93XX

## 8" GRINDING PLATES FOR UA & UD PULVERIZERS

- Plates vary in hardness and composition
- Two plates required for a set, one stationary (with hole) & one revolving

UA-51/52	IRON ALLOY
UA-94/95	SUPER IRON ALLOY
UA-85/86	HARDENED IRON
UA-81/82	LP CARBON STEEL
UA-2000R/S	CHROME ALLOY STEEL
UA-83/84	MANGANESE STEEL
UA-92/93XX	CERAMIC
LD-03/04	SEMI-STEEL PLATES (Sets Only)

## REPLACEMENT GRINDING BOWL & COMPONENTS

Available in wear resistant chrome alloy steel and tungsten carbide.

VP-45/50	250 ML	Chrome Alloy Grinding Set
VP-45/50TC	100 GM	Tungsten Carbide Grinding Set
VP-45/50CA	100 GM	Chrome Alloy Grinding Set

## VIBRATORY PULVERIZER



MODEL VP-1989

For efficient grinding of production samples.

The **VIBRATORY PULVERIZER** (Ring Mill) uses 2 rings and a puck inside a 250 ML (8" diameter) grinding bowl. A specially designed motor, directly coupled to a rotating eccentric, swings the bowl and components at a precise speed and distance for maximum grinding efficiency, thus rapidly reducing a wet or dry sample of minerals, ore, rock, soil or similar material to a final 400+ mesh.

### STANDARD FEATURES:

- 1HP, 3PH 50/60HZ, 208/220/440V MOTOR - (900 RPM)
- 250 ML Grinding Bowl/Lid and Components
- Starting Switch & Timer
- Insulated Cabinet for reduced operating noise
- DIM: 24" x 24" x 43" WT: 630 Lbs.
- Single Phase 220v 60Hz now available.

## DUST COLLECTOR

This unit has been specially designed to work with the BICO Pulverizers and Crushers to control nuisance dust in the work place. This unit is a down draft bench designed for controlling heavy dust jobs. No special electrical or duct work is required for this self-contained, portable, cost effective unit.



MODEL PC43-3

### STANDARD FEATURES:

- 500-700 FPM Tabletop Air Velocity
- Dust Removal Drawer
- Blower Exhaust Silencer
- Fluorescent Lighting
- Enclosed Top w / Hinged View Panel
- Replaceable 220 sq. ft. Filter Cartridge
- Inside DIM: (W) 50-1/4" x (H) 35" x (D) 36"
- Overall DIM: (W) 57" x (H) 60" x (D) 37"



### PLATE ALIGNER UA-1000

Designed to assist in plate alignment



VP-45/50



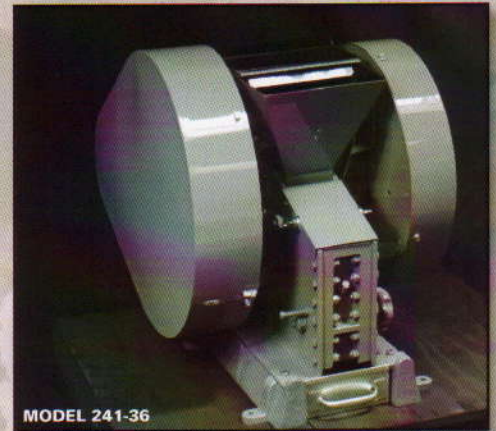
# JAW CRUSHERS

**BICO HAS DESIGNED** its equipment for laboratory, sample prep and pilot plant use. The JAW CRUSHERS will efficiently reduce any dry friable material. All units are easy to clean with easy access to all crushing surfaces. BICO equipment will increase productivity and ease your operation. With over a century of experience behind us, BICO offers you the best in low maintenance, heavy-duty, durable, compact laboratory equipment.

The Bico Chipmunk Jaw Crusher offers effective reduction of friable material, ore, mineral and chemical samples.

- **RUGGEDLY DESIGNED TO ABSORB THE SHOCK AND IMPACT OF CONSTANT USE**
- **EASY ACCESS TO ALL PARTS FOR RAPID CLEANING AND MAINTENANCE**
- **NEW SPACE SAVING MOTOR MOUNTING DESIGN**
- **FEED HOPPER & SAFETY GUARDS STANDARD WITH UNITS SUPPLIED WITH A MOTOR**
- **MANGANESE STEEL PLATES AVAILABLE**

**WD CHIPMUNK JAW CRUSHER**  
(Shown with Safety Guards & Feed Hopper)



## BICO BRAUN CHIPMUNK & BADGER CRUSHERS

TYPE	CAPACITY	RPM	HORSE POWER	JAW CAPACITY	REDUCTION SIZE		TYPE OF DRIVE	CATALOG NUMBER	GROSS WEIGHT LBS/KG
					MIN	MAX			
BICO BADGER APPROX. DIM: 32" x 24" x 20"	1300 LBS PER HOUR	400	5 5	5" x 7"	1/8"	3/4"	V-BELT, 3 PHASE V-BELT, 1 PHASE	241-38X5 241-38X5S	800/364 800/364
WD HEAVY DUTY APPROX. DIM: 28" x 19" x 32"	800 LBS PER HOUR	400	3 3	2 3/8" x 4"	1/16"	5/8"	V-BELT, 3 PHASE V-BELT, 1 PHASE V-BELT, WITHOUT MOTOR	241-36 241-36X3S 241-37	570/260 580/265 460/210
VD STANDARD APPROX. DIM: 25" x 19" x 30"	400 LBS PER HOUR	400	2 2	2 1/4" x 3"	1/16"	3/8"	V-BELT, 3 PHASE V-BELT, 1 PHASE V-BELT, WITHOUT MOTOR	241-34 241-34S2 241-35	390/177 395/180 285/130

### BADGER JAW CRUSHER

Exceptional Crushing capacity with minimum power consumption is obtained by the unique movable jaw motion. This insures maximum production in the lab and field.



Shown with optional B-57 Dust Collector Base and Ore Pan.

#### GENERAL FEATURES:

- Heavy-Duty fabricated Steel Main Frame
- Double End Shaft Motor applies power evenly to the machine
- Heavy-Duty Heat Treated Reversible Jaw & Cheek Plates.
- Dust Collection Base with Ore Pan available
- Heavy-Duty Sealed Spherical Roller Bearings
- All units complete with 5HP/3PH, DES TEFC Motor, Safety Guards and Feed Hopper
- Easy Jaw Adjustment

#### CAPACITY:

- Capable of reducing 5" x 7" quartz to 1/8" Chips at 1300 lbs. per hour
- DIM.: 32" x 24" x 20". WT.: 800 lbs.

### BALL MILL

Designed by F.C. Bond for use by cement companies and quality control laboratories. Meets the F.C. Bond Grindability Test criterion.



#### FEATURES:

- 12" cast iron drum
- 44.5 lb iron balls
- Digital counter for auto shut-off
- Receiving pan, hand screen pan & table
- Chrome balls available



# ASSAY LAB EQUIPMENT

## ELECTRIC ASSAY FURNACE

The Electric Assay Furnace has a capacity of 6-30 gram crucibles or 16 to 24 cupels. 2300 Degrees F. 115 or 200 volt. Unit complete with vent hood.



## FEATURES

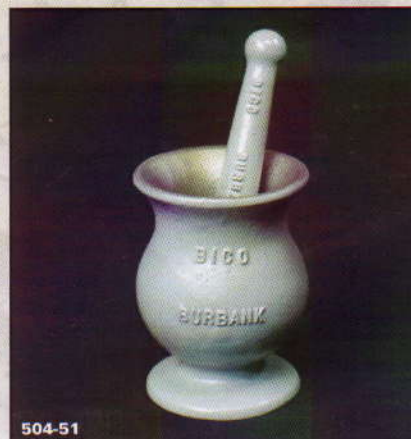
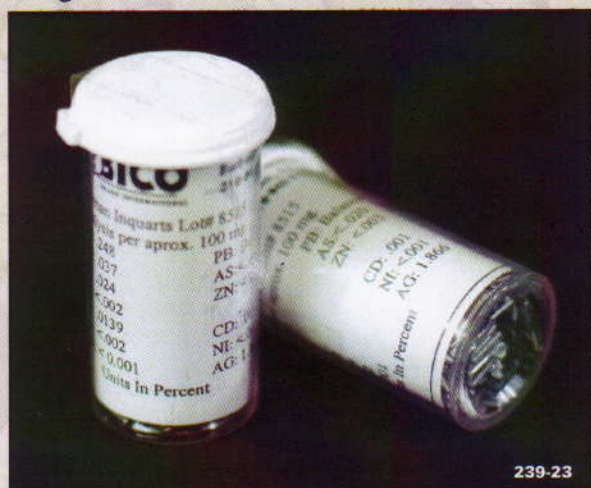
- Temperature Control
- Direct Indicating Pyrometer
- Convenient 115V 15amp, or 220V 8amp operation
- Inside Dimensions: 9" x 10" x 6.5"

ALL COMPLETE UNITS SOLD WITH PYROMETER, TEMP CONTROL, HEARTH PLATE, AND VENT HOOD

## HERMAN INQUARTS

Herman Inquarts (Gold Free) are little pellets of lead bullion, each containing a definite amount of silver. Just add one to the crucible before fusing or tap it into the cleaned lead button before cupellation and you can be sure of complete and accurate parting. No preliminary weighing of the added silver. No "punch and guess" results when you use these inquarts.

Herman Inquarts are uniform in silver content, easy to handle, save time and insure results. The exact silver content is marked on each package. Stock packages average 2mg of silver.



High Form  
Mortar & Pestle (1 Quart)

**BICO BRAUN INTERNATIONAL**  
WORLD-WIDE HEADQUARTERS  
www.bicoinc.com • Email: sales@bicoinc.com



3116 Valhalla Drive  
Burbank, CA 91505, U.S.A.  
Tel.: (818) 842-7179 Fax: (818) 842-7976