

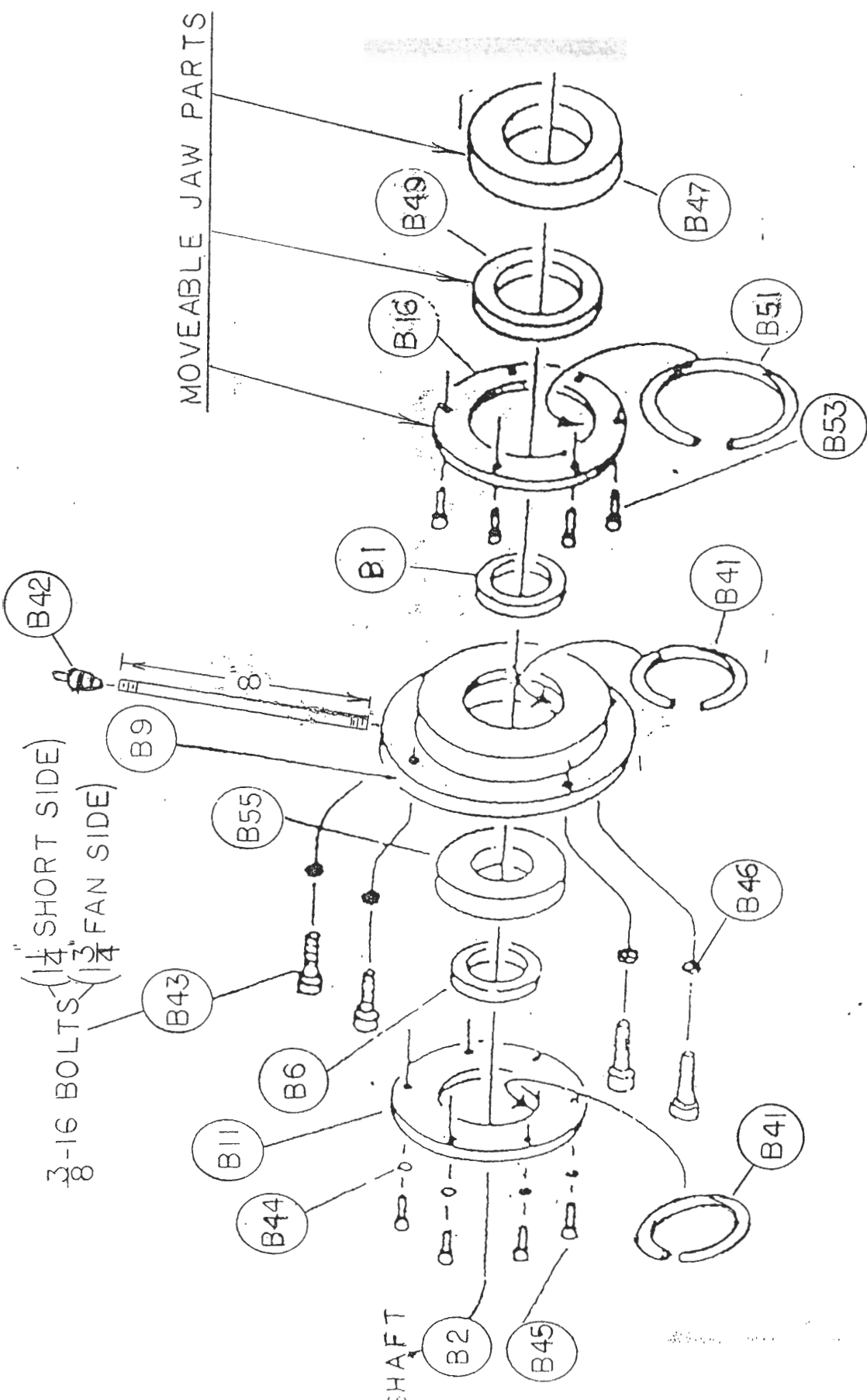
FOR JAW GAP ADJUSTMENT:

STOP MACHINE
 LOOSEN WING NUTS
 TURN ADJT. BOLT
 CLOCKWISE CLOSSES
 GAP, COUNTER CLK.
 OPENS GAP)
 TIGHTEN WING NUTS

Adjusting Blocks with Spring Rods and Tension Rods
 For Bico Badger Jaw Crusher

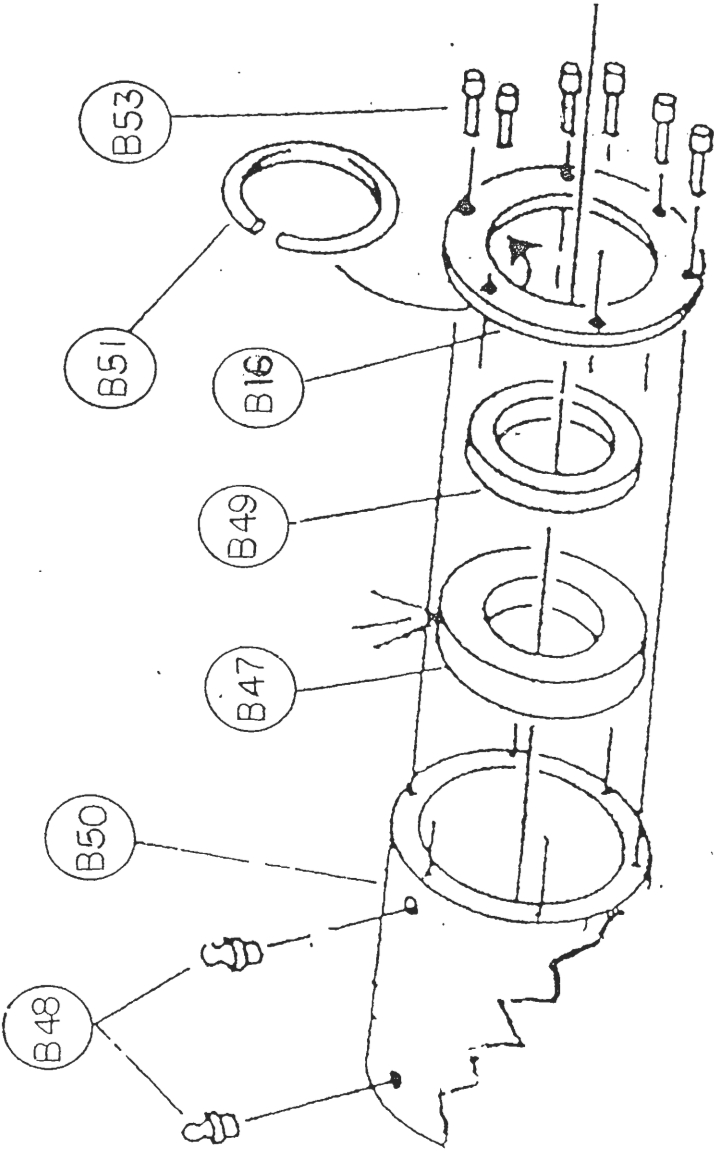
Diagram # 4.1

BICO, INC.
 3116 VALHALLA DRIVE
 P. O. BOX 6339
 BURBANK, CA 91510



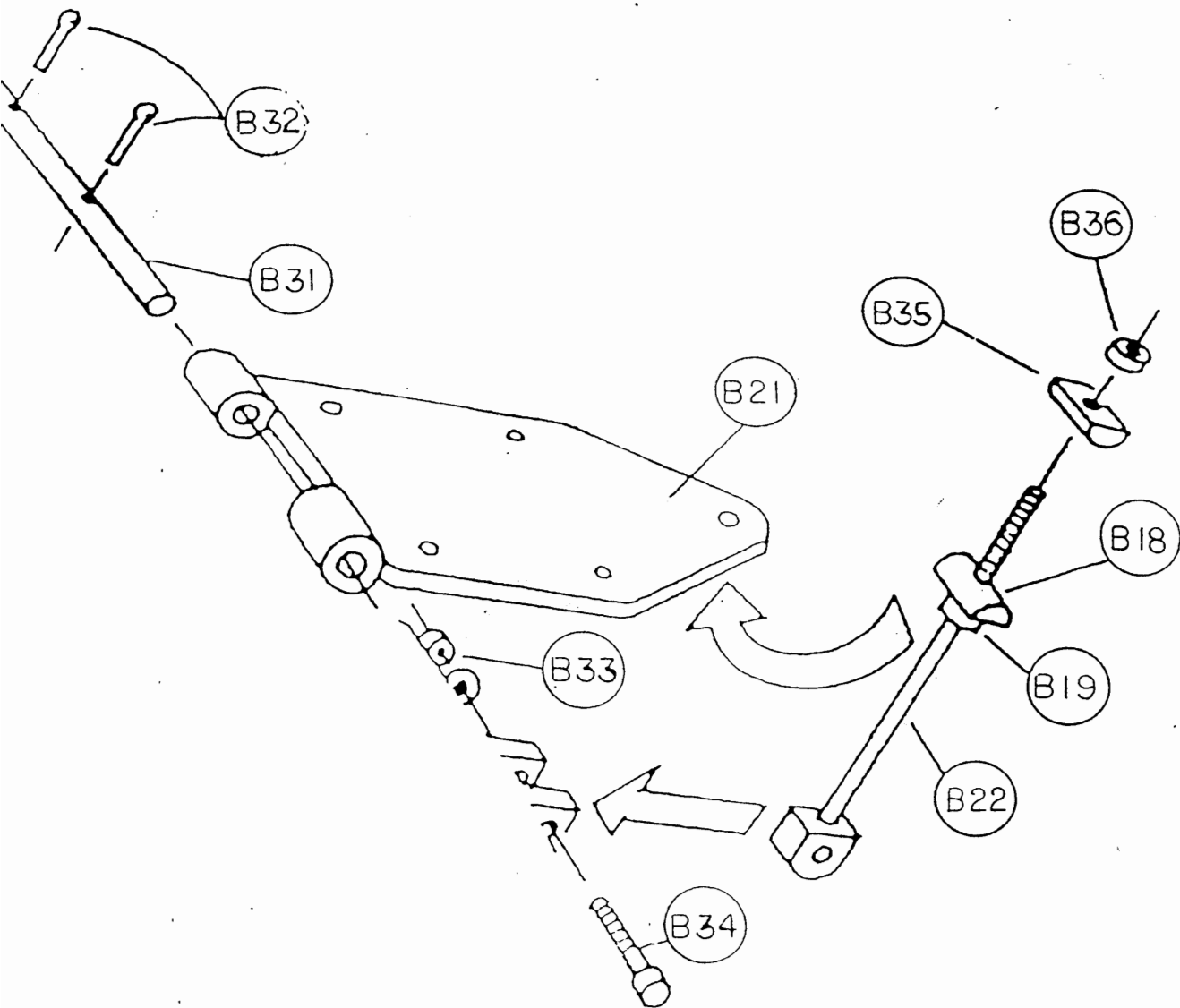
Frame Bearing Assembly for Bico Badger Jaw Crusher

Diagram # 1.1



Jaw Bearing Assembly for Bico Badger Jaw Crusher

Diagram # 2.1



Motor Mounting Assembly for Bico Badger Jaw Crusher

Diagram #5.1

Remove ring nut, lock washer and flat washer on shaft, (both sides.)

Remove bolts from both side bearing cages
(4 bolts each side.)

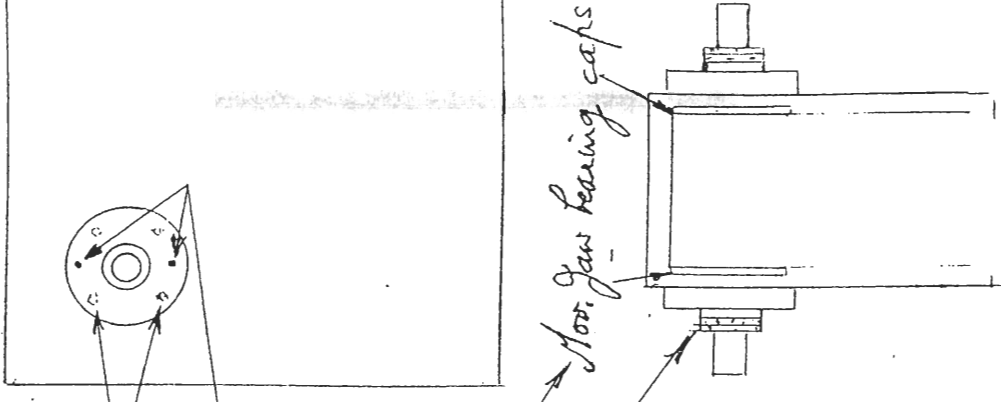
Screw bolts in these 2 holes (both sides) to push out side bearings

Remove moveable jaw bearing caps (behind side bearing cages)

Screw shaft puller bolts into these holes,
place round block on end of shaft and
screw center bolt against round block
to push out of one moveable jaw bearing
(other bearing stays on shaft).

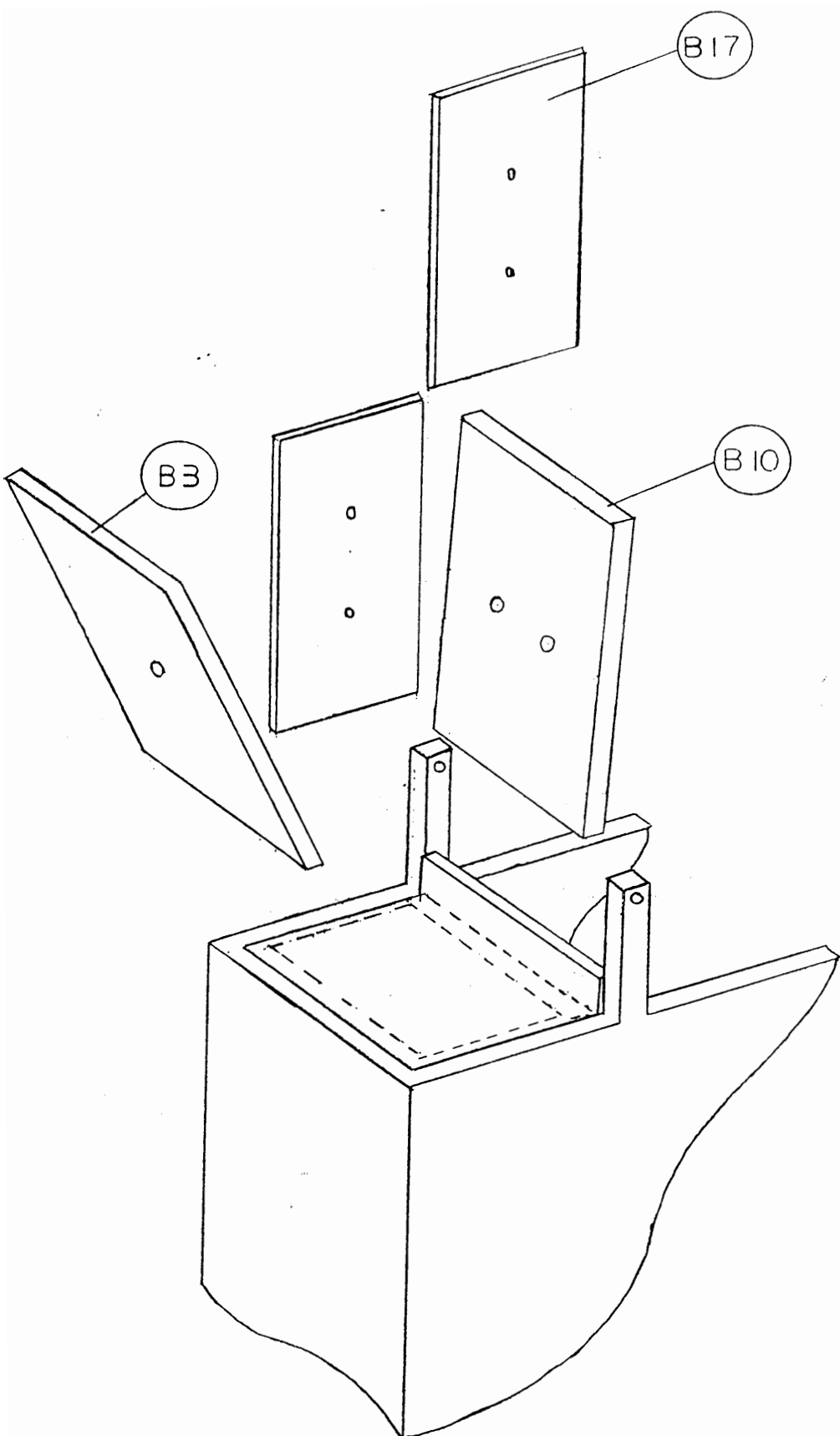
(Shaft puller, round block and extra
bolts supplied).

Remove old moveable jaw and insert
new jaw and assemble by following
above steps in reverse order.



Side View

Procedure to change moveable jaw on ladger.



Jaw Plates and Cheek Plates for Bico Badger Jaw Crusher

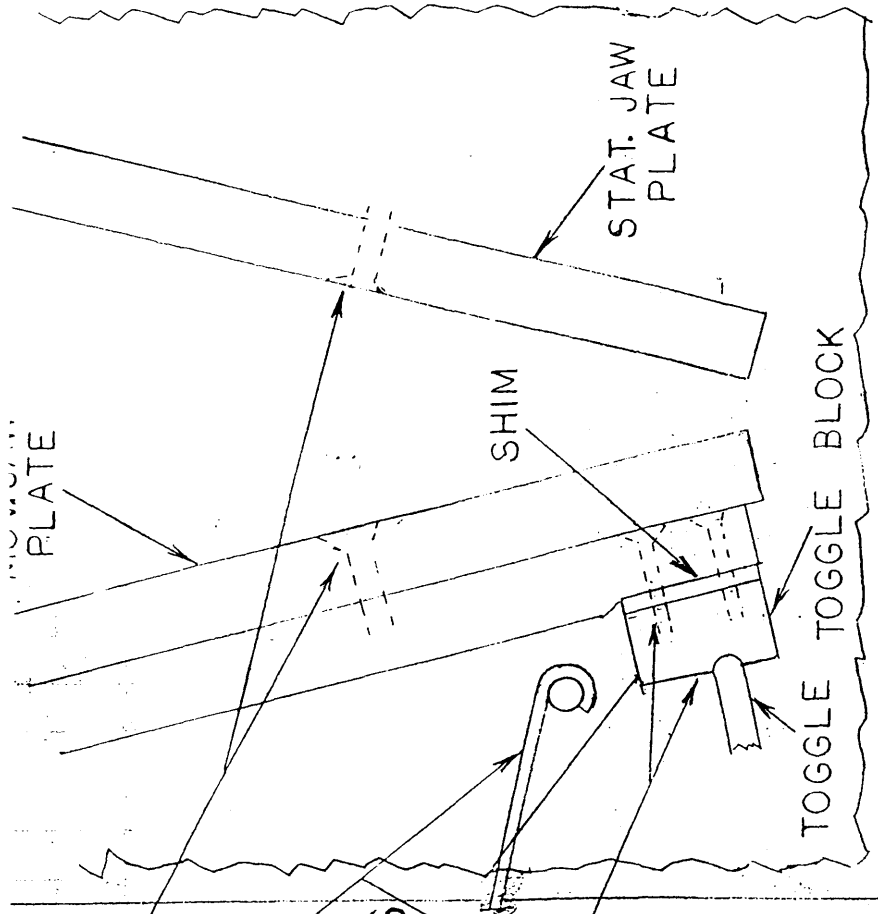
Diagram #3.1

MOV. JAWS - REMOVE JAW PLATES
 LAY CRUSHER ON SIDE - LOOSEN
 WING NUTS - REMOVE TENSION
 RODS (HOOKED IN BACK)
 REMOVE 4 TOGGLE BLOCK BOLTS
 AND REMOVE TOGGLE BLOCK,
 TOGGLE AND SHIM

DIFFERENT THICKNESSES OF
 SHIM AVAILABLE - THICKER SHIM
 CLOSES GAP

CRUSHER CAN BE ELEVATED IN
 ORDER TO WORK UNDERNEATH

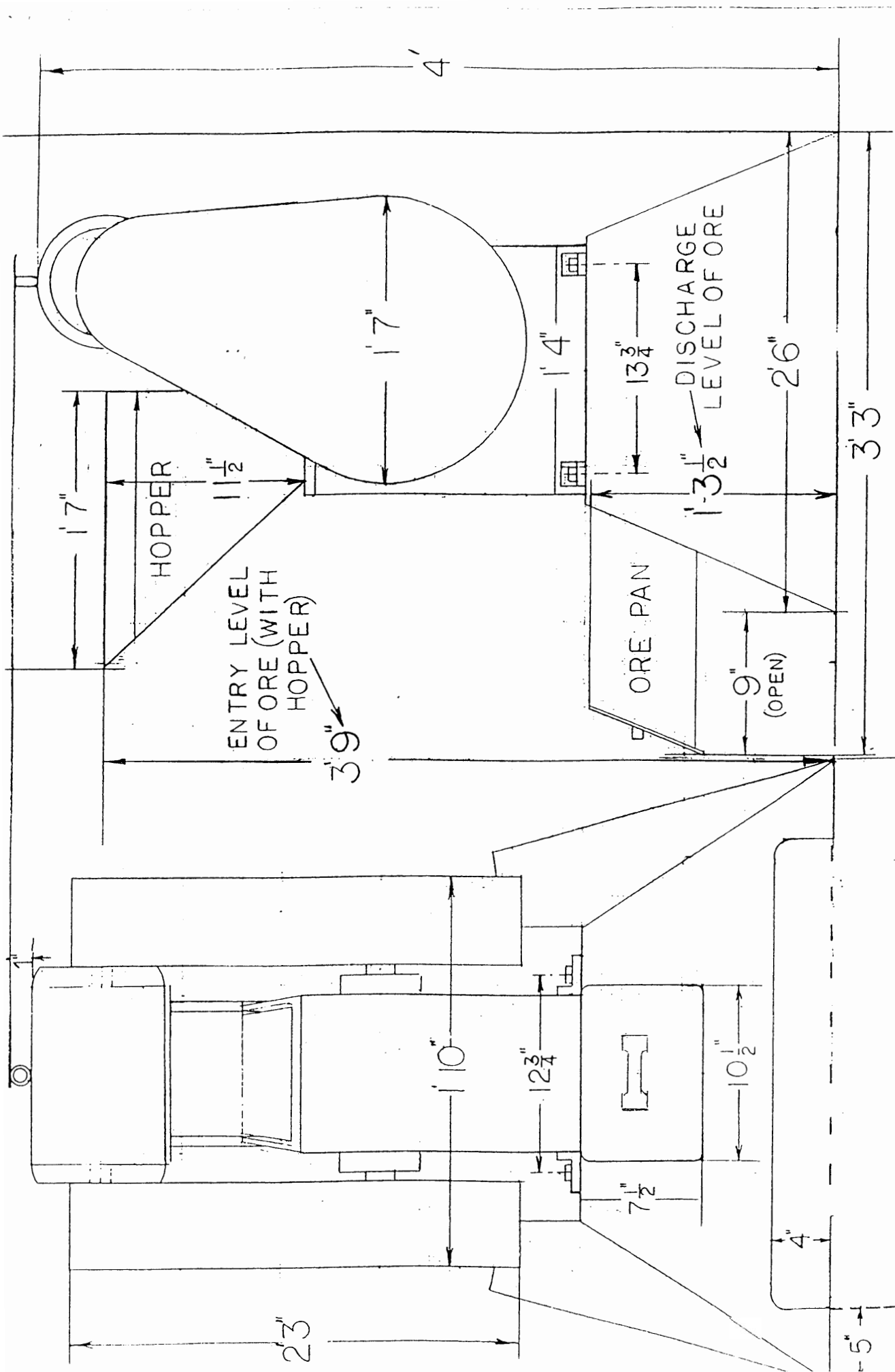
TO RE-ASSEMBLE, FOLLOW STEPS
 1, 2, 3, ABOVE, IN REVERSE ORDER



CUT-AWAY SIDE VIEW

BICO, INC.
 3116 VALHALLA DRIVE
 P. O. BOX 6339
 BURBANK, CA 91510

PROCEDURE TO INSTALL SHIMS UNDER TOGGLE BLOCK
BADGER



BICO INC

DRAWN BY: DF
 REVISD

SCALE: NONE
 DATE: 6-21-93

BADGER