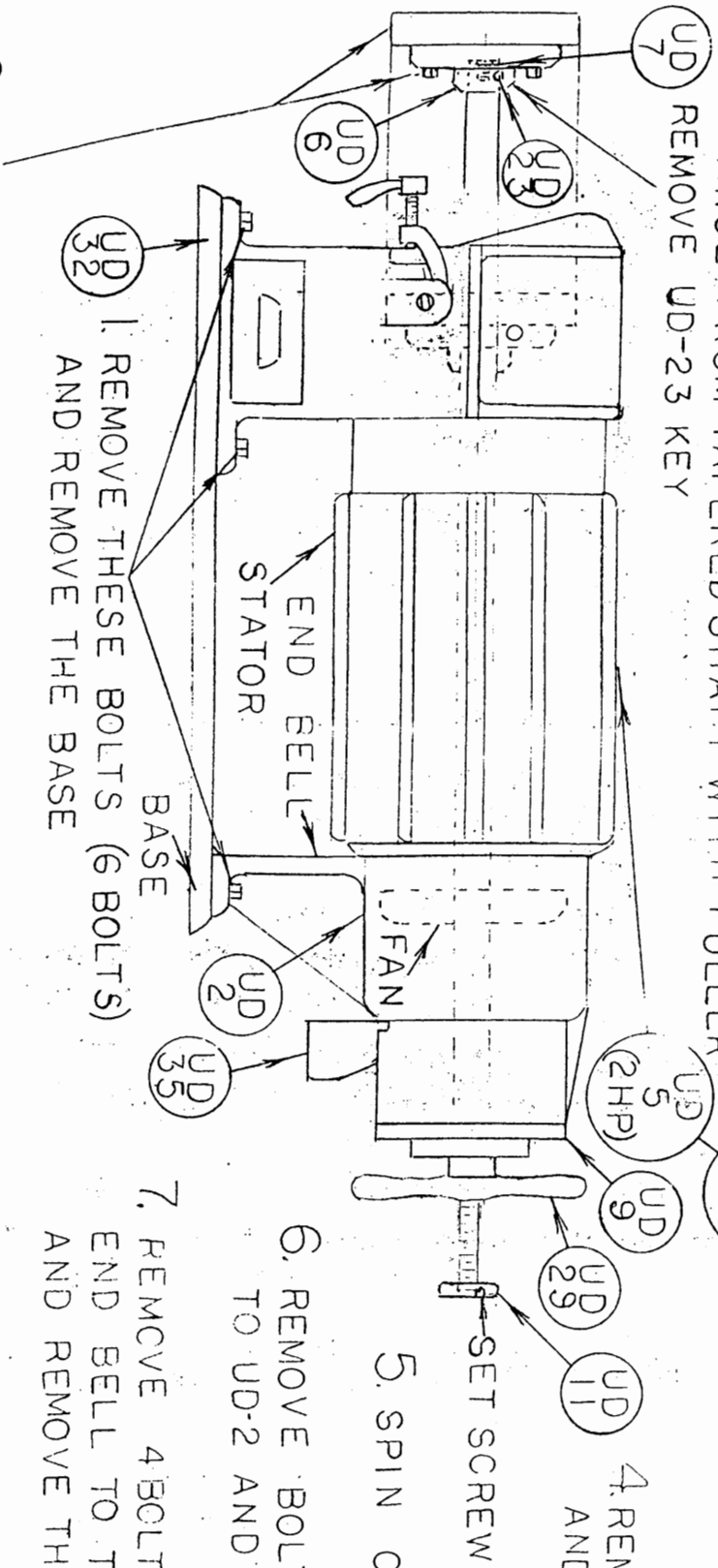


PROCEDURE TO REMOVE ROTOR AND SHAFT (UD PULVERIZER) (FOLLOW NUMBERED PROCEDURES)

3. REMOVE COUNTER SINK BOLT AND UD-7 LOCK WASHER AND PULL TAPERED FLANGE FROM TAPERED SHAFT WITH PULLER REMOVE UD-23 KEY



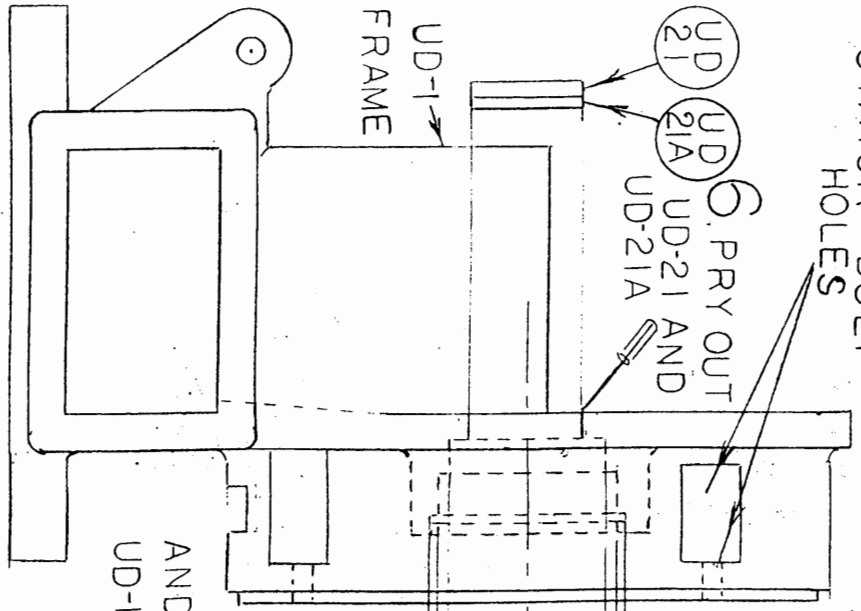
1. REMOVE THESE BOLTS (6 BOLTS) AND REMOVE THE BASE
2. REMOVE 3 BOLTS AND GRINDING PLATE
4. REMOVE SET SCREW AND SPIN OFF UD-11
5. SPIN OFF UD-29
6. REMOVE BOLTS HOLDING UD-9 TO UD-2 AND SPIN OFF UD-9
7. REMOVE 4 BOLTS HOLDING THE END BELL TO THE STATOR AND REMOVE THE END BELL
8. HOLD FAN IN BOTH HANDS AND PULL OUT THE ROTOR AND SHAFT

FOLLOW NUMBERED PROCEDURES IN REVERSE TO ASSEMBLE

NOTE: IN ORDER FOR THE UD-6 FLANGE TO RUN TRUE WHEN ASSEMBLED REMOVE ALL NICKS BURRS

PROCEDURE TO REPLACE FRONT BEARING (UD PULVERIZER) (FOLLOW NUMBERED PROCEDURES)

STATOR BOLT HOLES



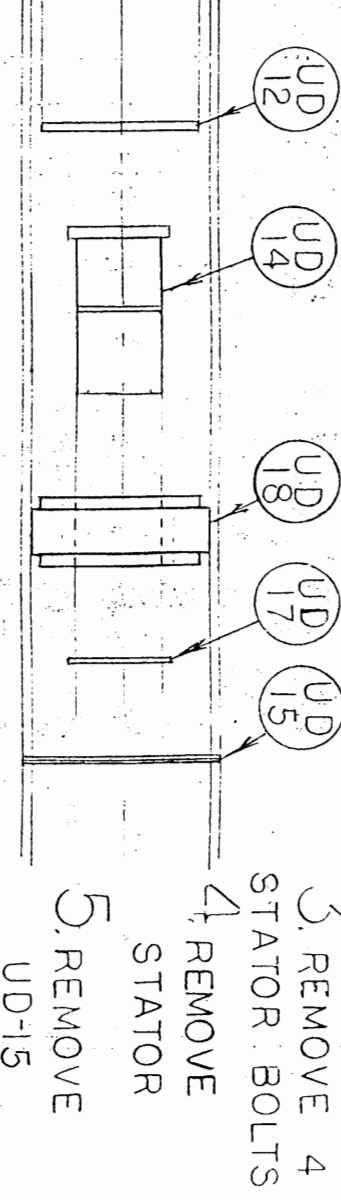
1. REMOVE ROTOR & SHAFT (SEPARATE SHEET)

2. REMOVE BAND COVERING STATOR BOLT HOLES

3. REMOVE 4 STATOR BOLTS

4. REMOVE STATOR

5. REMOVE UD-15

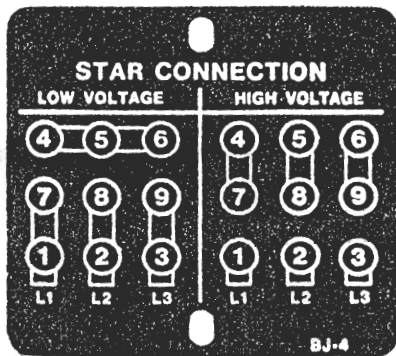


7. USE $2\frac{5}{16}$ DIA. ROUND BAR AND HAMMER, AND DRIVE OUT UD-12, UD-14, UD-18 AND UD-17

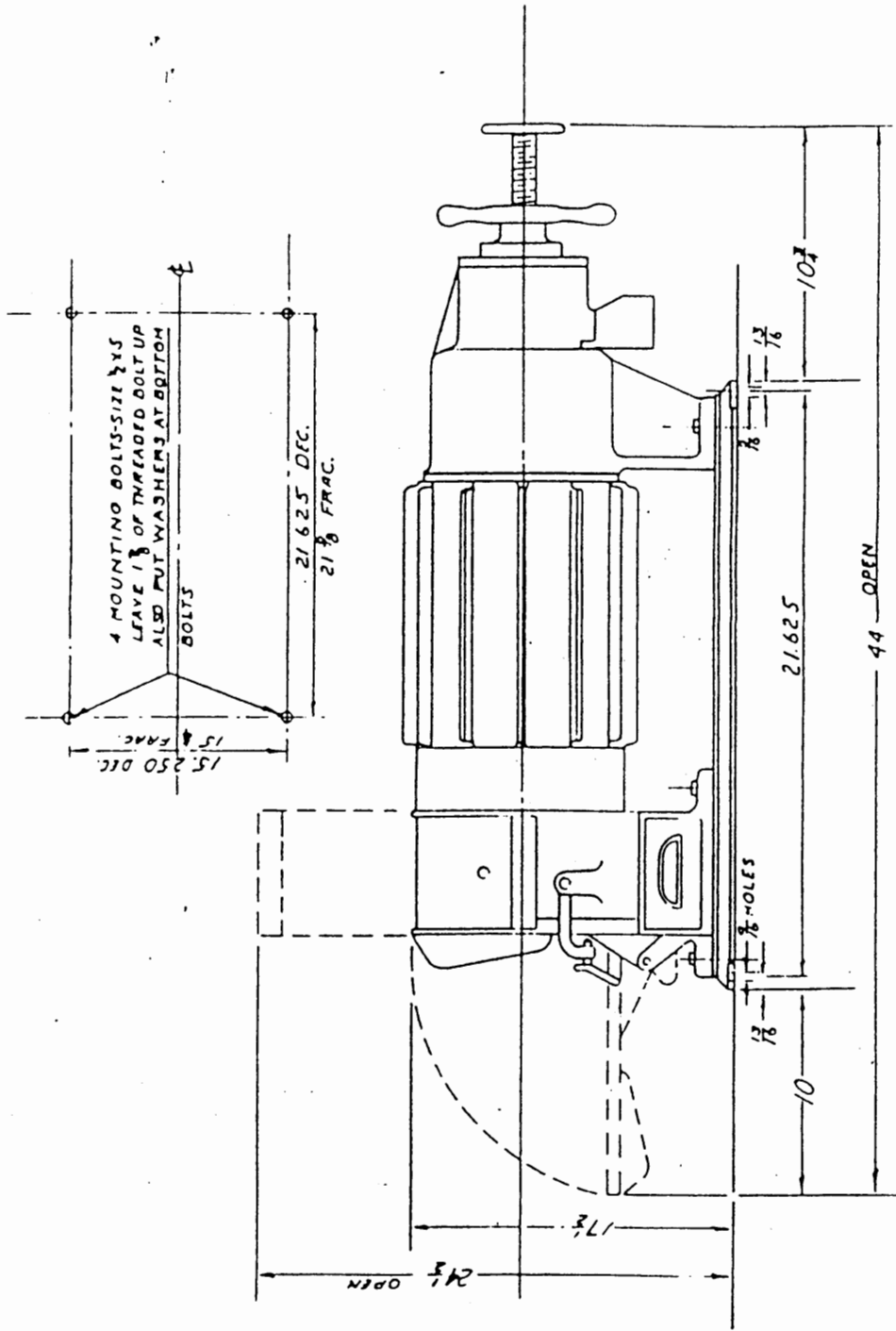
NOTE: UD-14, UD-18 AND UD-17 ARE REMOVED AND ASSEMBLED AS ONE UNIT

REMOVAL ASSEMBLY

1. PRESS UD-14 INTO UD-18 AND INSTALL UD-17 (COAT INSIDE OF UD-14 WITH ANTI-SEIZE & LUBRICATING COMPOUND TO PREVENT RUST FROM HEAT BUILD-UP)
2. LIGHTLY COAT BOTH SIDES OF UD-12 WITH GREASE & INSTALL
3. USE RING, PRESSING AGAINST THE LARGEST DIAMETER OF UD-18, AND PRESS UD-18, UD-14 AND UD-17 INTO UD-1 FRAME (MAKE SURE EVERYTHING IS FULLY AND EVENLY SEATED)
4. INSTALL UD-15
5. INSTALL NEW UD-21 AND NEW UD-21A
6. REPLACE STATOR, 4 STATOR BOLTS AND SHAFT AND BAND
7. FOLLOW ASSEMBLY PART OF ROTOR AND SHAFT INSTRUCTION SHEET



Wiring Diagram for UD Pulv.
 Sample for all 3Ø mtrs ^{50/60}
 Low voltage 220V., 190V.
 High voltage 380V. - 440V.



3 HP DIRECT DRIVEN SUPER PULVERIZER
SCHEMATIC DRAWING SCALE NONE

BICO INC.	3116 VALHALLA DRIVE BURBANK, CALIF.
3 HP DIRECT DRIVEN SUPER PULVERIZER	
DES. BY JOSEPH DIPALMA	DATE J-20-1956
DRAWN BY BAUDETTE	SCALE NONE
NAME OF PART	DRAWING NUMBER

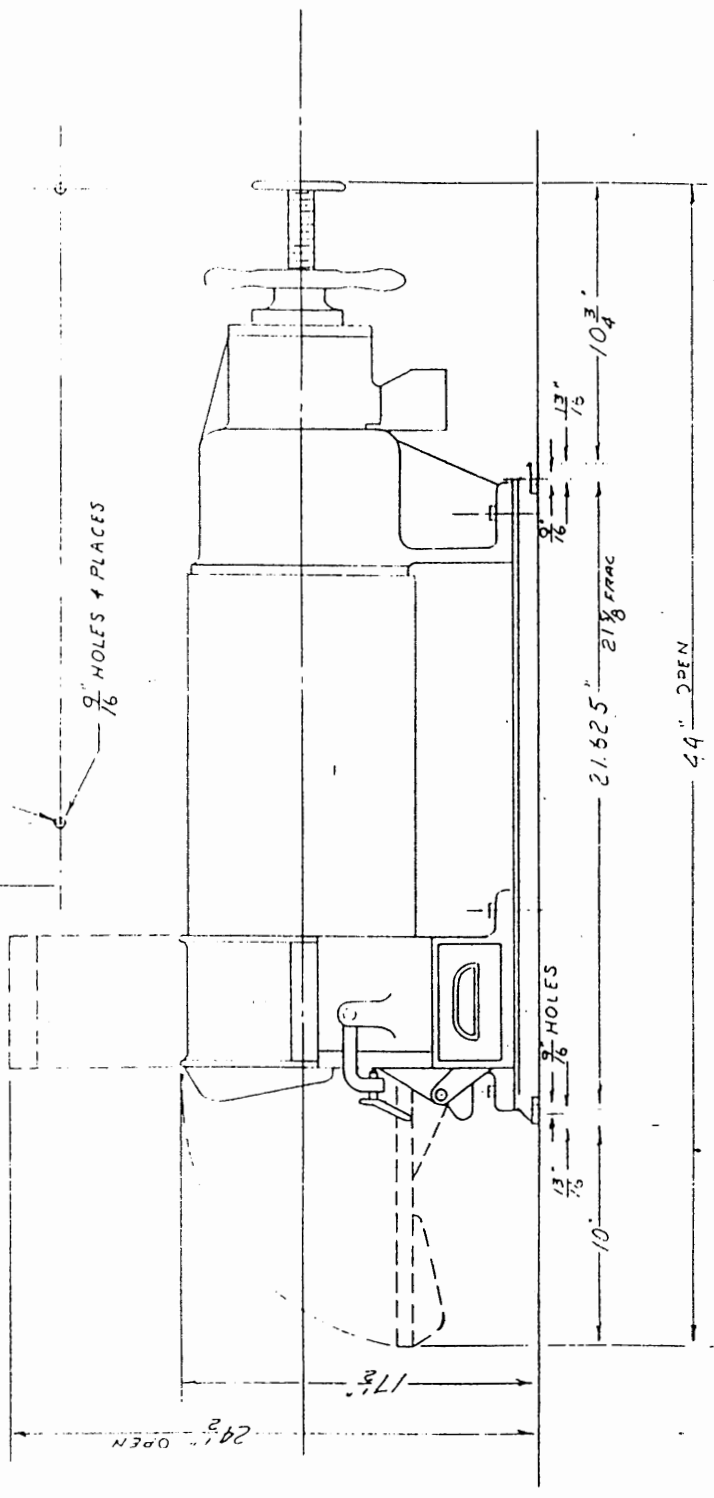
CERTIFIED	5-8-61

21.625" DEC.
21.98" FRAC.

4 MOUNTING BOLTS - 1/2 x 5
LEAVE 1/8 OF THREADED BOLT UP
ALSO PUT WASHERS AT BOTTOM OF BOLTS.

9" HOLES 4 PLACES

15.250" DEC.
15.4" FRAC.



BICO INC.	3116 VALHALLA DRIVE BURBANK, CALIFORNIA
2 HP DIRECT DRIVE PULVERIZER	DES BY J. J. P. LMA
DRAYIN BY BAUDETTE	QUANTITY
CERTCHK'D BY	SCALE NONE
NAME OF PART	DATE 3-20-1961
DRAWING NUMBER	

DATE BY CAT. # 242-67 UD PULY.

REVISIONS

A

3-1-A

